

Stainless Products, Inc.

www.stainless-products.com



Sanitary and Industrial Fittings

Stainless Products, Inc.

1649 72nd Avenue

Somers, WI 53171

Ph: 800-558-9446 • 262-859-2826 Fax: 262-859-2871

www.stainless-products.com

Table of Contents

Fittings	Pages
Sanitary Weld Fittings	1-5
Sanitary Clamp Fittings	6-13
Industrial Weld Fittings	14-15
John Perry / Bevel Seat Fittings	16-23
Six Inch Fittings	24-26
Fractional Fittings	27-32
Threaded End Caps and Wrenches	33
Thermometer Ferrules and SP251 Check Valves	34
Clamp/Tube x Pipe Adapters	35
SP484 Line Orifices	36
180 Deg. U-Bend and Special "Y" Elbows	37
Flow Plate Accessories	38
SP250 Screen Tees	39

Contact factory for I-line , Q-Line , 5" and 8" fittings.



Stainless Products, Inc. sanitary fittings meet the standards of 63-03, Authorization # 334.

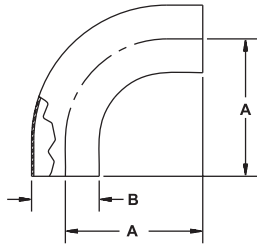
** Bevel Seat fittings are not intended for CIP cleaning. Manual cleaning is required.

** SP14R, SP31R, 14R, 15R, 31R, JP14R, JP15R, JP31R, and JP32R are intended for farm repair only.

Please contact the factory or visit our website to inquire on our complete line of stainless steel flow components.

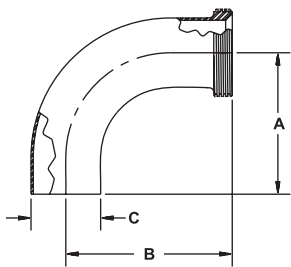
Sanitary Weld Fittings

SP2S - 90 DEG. EL. BUTT-WELD ENDS



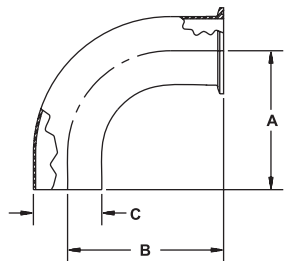
Size	1"	1.5"	2"	2.5"	3"	4"
A	2.06"	2.94"	4.06"	5.31"	6.31"	8.31"
B	1.00"	1.50"	2.00"	2.50"	3.00"	4.00"

SP2T - 90 DEG. EL. 15 x BUTT-WELD



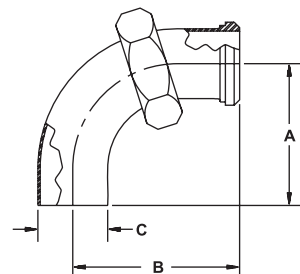
Size	1"	1.5"	2"	2.5"	3"	4"
A	---	2.94"	4.06"	5.19"	6.31"	8.31"
B	---	3.66"	4.78"	6.03"	7.22"	9.53"
C	---	1.50"	2.00"	2.50"	3.00"	4.00"

SP2CW - 90 DEG. EL. SP-CLAMP x BUTT-WELD



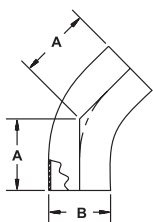
Size	1"	1.5"	2"	2.5"	3"	4"
A	---	2.94"	4.06"	5.19"	6.31"	8.31"
B	---	3.44"	4.56"	5.69"	6.81"	8.94"
C	---	1.50"	2.00"	2.50"	3.00"	4.00"

SP2F - 90 DEG. EL. 13H-14 x BUTT-WELD



Size	1"	1.5"	2"	2.5"	3"	4"
A	---	2.94"	4.06"	5.19"	6.31"	8.31"
B	---	3.66"	4.78"	6.03"	7.22"	9.53"
C	---	1.50"	2.00"	2.50"	3.00"	4.00"

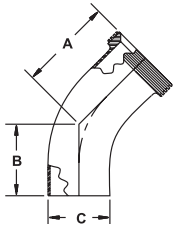
SP2KS - 45 DEG. EL. BUTT-WELD



Size	1"	1.5"	2"	2.5"	3"	4"
A	1.19"	1.63"	2.31"	3.00"	3.69"	4.81"
B	1.00"	1.50"	2.00"	2.50"	3.00"	4.00"

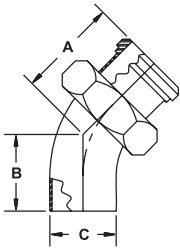
Sanitary Weld Fittings

SP2KT - 45 DEG. EL. 15 x BUTT-WELD



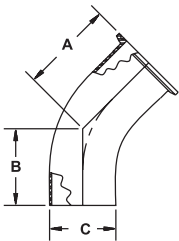
Size	1"	1.5"	2"	2.5"	3"	4"
A	---	2.34"	3.03"	3.84"	4.59"	6.03"
B	---	1.63"	2.31"	3.00"	3.69"	4.87"
C	---	1.50"	2.00"	2.50"	3.00"	4.00"

SP2KP - 45 DEG. EL. 13H-14 x BUTT-WELD



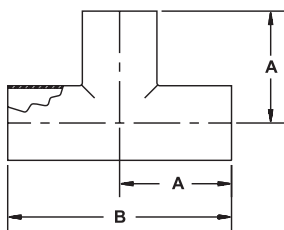
Size	1"	1.5"	2"	2.5"	3"	4"
A	---	2.34"	3.03"	3.84"	4.59"	6.03"
B	---	1.63"	2.31"	3.00"	3.69"	4.81"
C	---	1.50"	2.00"	2.50"	3.00"	4.00"

SP2KCW - 45 DEG. EL. SP-CLAMP x BUTT-WELD



Size	1"	1.5"	2"	2.5"	3"	4"
A	---	2.13"	2.81"	3.50"	4.19"	5.44"
B	---	1.63"	2.31"	3.00"	3.69"	4.81"
C	---	1.50"	2.00"	2.50"	3.00"	4.00"

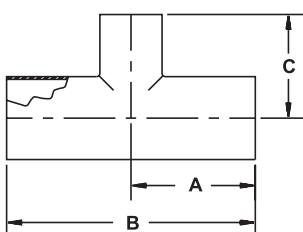
SP7W - BUTT-WELD TEE



Size	1"	1.5"	2"	2.5"	3"	4"
A	1.88"	2.25"	3.00"	3.00"	3.25"	3.88"
B	3.75"	4.50"	6.00"	6.00"	6.50"	7.75"

Available in 32Ra or Unpolished finish

SP7WR - BUTT-WELD REDUCING TEE



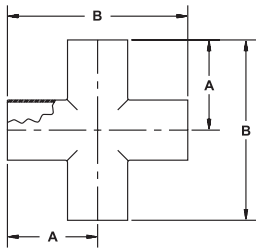
Size	1.5" x 1"	2" x 1.5"	2.5" x 2"	3" x 2"	3" x 2.5"	4" x 3"
A	2.25"	3.00"	3.00"	3.25"	3.25"	3.88"
B	4.50"	6.00"	6.00"	6.50"	6.50"	7.75"
C	2.13"	2.50"	3.25"	3.50"	3.25"	3.75"

Available in 32Ra or Unpolished finish

** Contact Factory for Sizes Not Shown **

Sanitary Weld Fittings

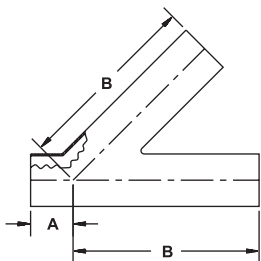
SP9W - CROSS BUTT-WELD



Size	1"	1.5"	2"	2.5"	3"	4"
A	1.88"	2.25"	3.00"	3.00"	3.25"	3.88"
B	3.75"	4.50"	6.00"	6.00"	6.50"	7.75"

Available in 32Ra or Unpolished finish
Contact factory for reducing sizes

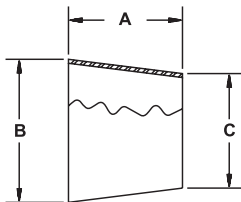
SP28WA - BUTT-WELD LATERAL



Size	1"	1.5"	2"	2.5"	3"	4"
A	1.00"	1.18"	1.63"	1.50"	1.88"	2.06"
B	5.00"	6.19"	7.13"	8.50"	8.88"	10.75"

Available in 32Ra or Unpolished finish
Contact factory for reducing sizes

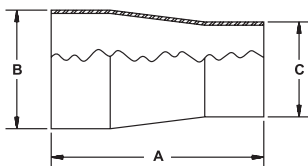
SP31 - CONCENTRIC REDUCER



Size	1.5" x 1"	2" x 1.5"	2.5" x 2"	3" x 2"	3" x 2.5"	4" x 3"
A	2.00"	2.00"	2.00"	4.00"	2.00"	4.00"
B	1.50"	2.00"	2.50"	3.00"	3.00"	4.00"
C	1.00"	1.50"	2.00"	2.00"	2.50"	3.00"

Available in 32Ra or Unpolished finish

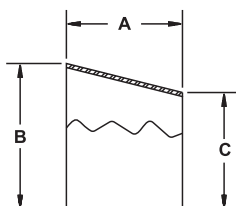
SP31E - LONG TANGENT CONCENTRIC REDUCER



Size	1.5" x 1"	2" x 1.5"	2.5" x 2"	3" x 2"	3" x 2.5"	4" x 3"
A	3.38"	3.88"	4.25"	6.38"	4.50"	6.75"
B	1.50"	2.00"	2.50"	3.00"	3.00"	4.00"
C	1.00"	1.50"	2.00"	2.00"	2.50"	3.00"

Available in 32Ra or Unpolished finish

SP32 - ECCENTRIC REDUCER



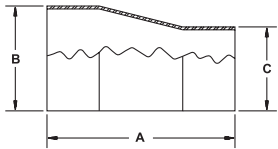
Size	1.5" x 1"	2" x 1.5"	2.5" x 2"	3" x 2"	3" x 2.5"	4" x 3"
A	2.00"	2.00"	2.00"	4.00"	2.00"	4.00"
B	1.50"	2.00"	2.50"	3.00"	3.00"	4.00"
C	1.00"	1.50"	2.00"	2.00"	2.50"	3.00"

Available in 32Ra or Unpolished finish

** Contact Factory for Sizes Not Shown **

Sanitary Weld Fittings

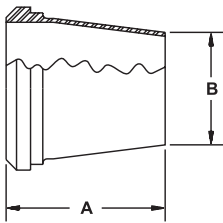
SP32E - LONG TANGENT ECCENTRIC REDUCER



Size	1.5" x 1"	2" x 1.5"	2.5" x 2"	3" x 2"	3" x 2.5"	4" x 3"
A	3.38"	3.88"	4.25"	6.38"	4.50"	6.75"
B	1.50"	2.00"	2.50"	3.00"	3.00"	4.00"
C	1.00"	1.50"	2.00"	2.50"	2.50"	3.00"

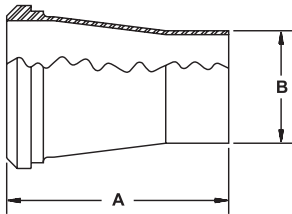
Available in 32Ra or Unpolished finish

SP31PW - CONCENTRIC REDUCER 14 x BUTT-WELD



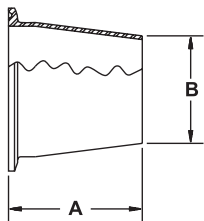
Size	1.5" x 1"	2" x 1.5"	2.5" x 2"	3" x 2"	3" x 2.5"	4" x 3"
A	2.72"	2.72"	2.84"	4.91"	2.91"	5.03"
B	1.00"	1.50"	2.00"	2.00"	2.50"	3.00"

SP31EPW - LONG TANGENT CONCENTRIC REDUCER 14 x BUTT-WELD



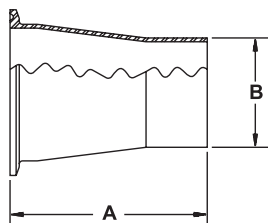
Size	1.5" x 1"	2" x 1.5"	2.5" x 2"	3" x 2"	3" x 2.5"	4" x 3"
A	3.81"	3.66"	3.97"	6.09"	4.16"	6.41"
B	1.00"	1.50"	2.00"	2.00"	2.50"	3.00"

SP31CW - CONCENTRIC REDUCER SP-CLAMP x BUTT-WELD



Size	1.5" x 1"	2" x 1.5"	2.5" x 2"	3" x 2"	3" x 2.5"	4" x 3"
A	2.50"	2.50"	2.50"	4.50"	2.50"	4.63"
B	1.00"	1.50"	2.00"	2.00"	2.50"	3.00"

SP31ECW - LONG TANGENT CONCENTRIC REDUCER SP CLAMP x BUTT-WELD

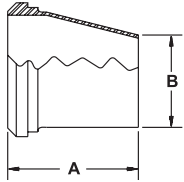


Size	1.5" x 1"	2" x 1.5"	2.5" x 2"	3" x 2"	3" x 2.5"	4" x 3"
A	3.19"	3.22"	3.63"	5.69"	3.75"	5.88"
B	1.00"	1.50"	2.00"	2.00"	2.50"	3.00"

** Contact Factory for Sizes Not Shown **

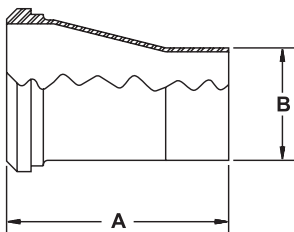
Sanitary Weld Fittings

SP32PW - ECCENTRIC REDUCER 14 x BUTT-WELD



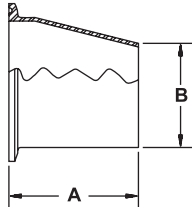
Size	1.5" x 1"	2" x 1.5"	2.5" x 2"	3" x 2"	3" x 2.5"	4" x 3"
A	2.72"	2.72"	2.84"	4.91"	2.91"	5.03"
B	1.00"	1.50"	2.00"	2.00"	2.50"	3.00"

SP32EPW - LONG TANGENT ECCENTRIC REDUCER 14 x BUTTWELD



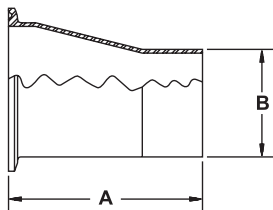
Size	1.5" x 1"	2" x 1.5"	2.5" x 2"	3" x 2"	3" x 2.5"	4" x 3"
A	3.41"	3.66"	3.97"	6.09"	4.17"	6.41"
B	1.00"	1.50"	2.00"	2.00"	2.50"	3.00"

SP32CW - ECCENTRIC REDUCER SP-CLAMP x BUTTWELD



Size	1.5" x 1"	2" x 1.5"	2.5" x 2"	3" x 2"	3" x 2.5"	4" x 3"
A	2.50"	2.50"	2.50"	4.50"	2.50"	4.63"
B	1.00"	1.50"	2.00"	2.00"	2.50"	3.00"

SP32ECW - ECCENTRIC REDUCER SP-CLAMP x BUTTWELD

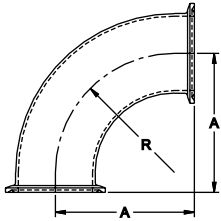


Size	1.5" x 1"	2" x 1.5"	2.5" x 2"	3" x 2"	3" x 2.5"	4" x 3"
A	3.19"	3.22"	3.63"	5.69"	3.75"	5.88"
B	1.00"	1.50"	2.00"	2.00"	2.50"	3.00"

** Contact Factory for Sizes Not Shown **

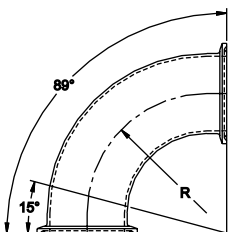
Sanitary Clamp Fittings

SP2C - 90 DEG. EL. BOTH ENDS SP-CLAMP



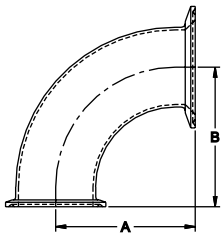
Size	1"	1.5"	2"	2.5"	3"	4"
A	2.00"	2.75"	3.50"	4.25"	5.00"	6.63"
R	1.50"	2.25"	3.00"	3.75"	4.50"	6.00"

SP2CCA - 90 DEG. EL. CUSTOM ANGLE (MADE TO ORDER)



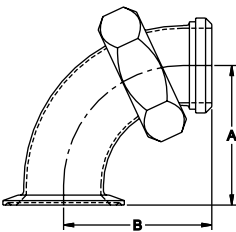
Size	1"	1.5"	2"	2.5"	3"	4"
R	---	2.25	3.00	3.75	4.50	---

SP2C-31 - 90 DEG. EL. BOTH ENDS SP-CLAMP



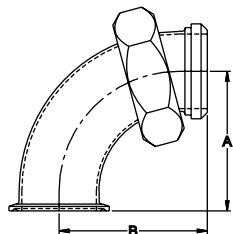
Size	2"x1"	2"x1.5"	2.5"x2"	3"x2"	3"x2.5"	4"x3"
A	2.00"	2.75"	3.50"	3.50"	4.25"	5.13"
B	2.00"	2.75"	3.50"	3.50"	4.25"	5.00"

SP2E-31 - 90 DEG. EL. LARGE END CLAMP / SMALL END 13H-14



Size	2"x1"	2"x1.5"	2.5"x2"	3"x2"	3"x2.5"	4"x3"
A	2.00"	2.75"	3.50"	3.50"	4.25"	5.13"
B	2.19"	2.97"	3.72"	3.72"	4.60"	5.41"

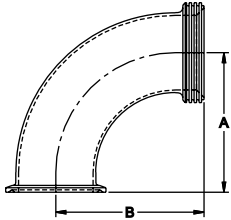
SP2F-14 - 90 DEG. EL. ONE END SP-CLAMP / OTHER END 13H-14



Size	1"	1.5"	2"	2.5"	3"	4"
A	---	2.75"	3.50"	4.25"	5.00"	6.63"
B	---	2.67"	3.72"	4.60"	5.41"	7.03"

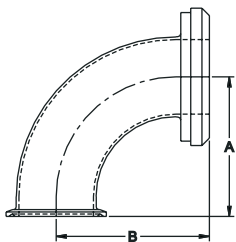
Sanitary Clamp Fittings

SP2F-15 - 90 DEG. EL. ONE END 15 OTHER END SP-CLAMP



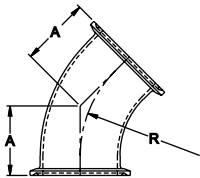
Size	1"	1.5"	2"	2.5"	3"	4"
A	---	2.75"	3.50"	4.25"	5.00"	6.63"
B	---	2.97"	3.72"	4.60"	5.41"	7.03"

SP2F-31 - 90 DEG. EL. LARGE END 14 OTHER END SP-CLAMP



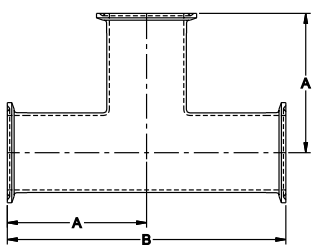
Size	2" x 1"	2" x 1.5"	2.5" x 2"	3" x 2"	3" x 2.5"	4" x 3"
A	2.00"	2.75"	3.50"	3.50"	4.25"	5.00"
B	2.25"	3.00"	3.78"	3.84"	4.59"	5.53"

SP2K - 45 DEG. EL. SP-CLAMP BOTH ENDS



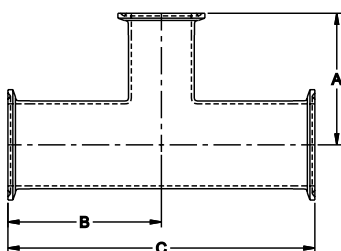
Size	1"	1.5"	2"	2.5"	3"	4"
A	1.13"	1.44"	1.75"	2.06"	2.38"	3.13"
R	1.50"	2.25"	3.00"	3.75"	4.50"	6.00"

SP7 - TEE ALL ENDS SP-CLAMP



Size	1"	1.5"	2"	2.5"	3"	4"
A	2.38"	2.75"	3.50"	3.50"	3.75"	4.50"
B	4.75"	5.50"	7.00"	7.00"	7.50"	9.00"

SP7R- REDUCING TEE ALL ENDS SP-CLAMP

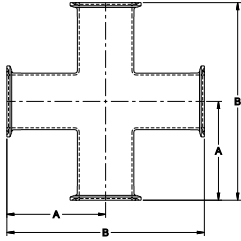


Size	1.5" x 1"	2" x 1.5"	2.5" x 2"	3" x 2"	3" x 2.5"	4" x 3"
A	2.63"	3.00"	3.75"	4.00"	3.75"	4.25"
B	2.75"	3.50"	3.50"	3.75"	3.75"	4.25"
C	5.50"	7.00"	7.00"	7.50"	7.50"	9.00"

** Contact Factory for Sizes Not Shown **

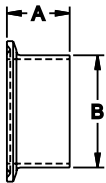
Sanitary Clamp Fittings

SP9 - CROSS ALL ENDS SP-CLAMP



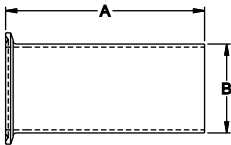
Size	1"	1.5"	2"	2.5"	3"	4"
A	2.38"	2.75"	3.50"	3.50"	3.75"	4.50"
B	4.75"	5.50"	7.00"	7.00"	7.50"	9.00"

SP14A - WELD FERRULE



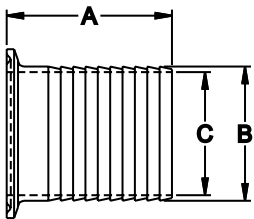
Size	1"	1.5"	2"	2.5"	3"	4"
A	1.13"	1.13"	1.13"	1.13"	1.13"	1.13"
B	1.00"	1.50"	2.00"	2.50"	3.00"	4.00"

SP14AHT - TYGON HOSE ADAPTER



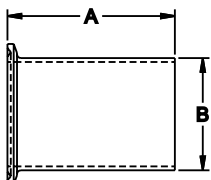
Size	1"	1.5"	2"	2.5"	3"	4"
A	4.50"	4.50"	4.50"	4.50"	4.50"	4.50"
B	1.00"	1.50"	2.00"	2.50"	3.00"	4.00"

SP14AHR - RUBBER HOSE ADAPTER



Size	1"	1.5"	2"	2.5"	3"	4"
A	2.50"	2.50"	2.50"	2.50"	2.50"	2.63"
B	1.00"	1.50"	2.00"	2.50"	3.00"	4.00"
C	.834"	1.33"	1.83"	2.33"	2.83"	3.83"

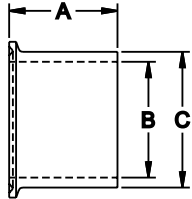
SP14WL - LONG WELD FERRULE



Size	1"	1.5"	2"	2.5"	3"	4"
A	3.00"	3.00"	3.00"	3.00"	4.00"	4.00"
B	1.00"	1.50"	2.00"	2.50"	3.00"	4.00"

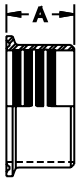
Sanitary Clamp Fittings

SP14W - HEAVY WALL FERRULE



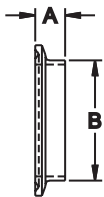
Size	1"	1.5"	2"	2.5"	3"	4"
A	1.63"	1.63"	1.75"	1.75"	1.69"	2.13"
B	.870"	1.37"	1.87"	2.37"	2.87"	3.83"
C	1.16"	1.68"	2.19"	2.71"	3.22"	4.26"

SP14R - ROLL ON FERRULE



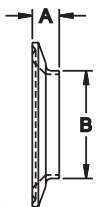
Size	1"	1.5"	2"	2.5"	3"	4"
A	.750"	1.13"	1.19"	1.38"	1.44"	1.50"

SP14SW - SHORT WELD FERRULE



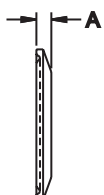
Size	1"	1.5"	2"	2.5"	3"	4"
A	.50"	.50"	.50"	.50"	.50"	.625"
B	1.00"	1.50"	2.00"	2.50"	3.00"	4.00"

SP14SW-31 - REDUCING SHORT WELD FERRULE



Size	1.5" x 1"	2" x 1.5"	2.5" x 2"	3" x 2"	3" x 2.5"	4" x 3"
A	.50"	.50"	.50"	.50"	.50"	.625"
B	1.00"	1.50"	2.00"	2.00"	2.50"	3.00"

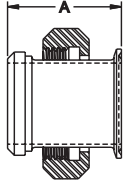
SP16A - SOLID END CAP



Size	1"	1.5"	2"	2.5"	3"	4"
A	---	.25"	.25"	.25"	.25"	.25"

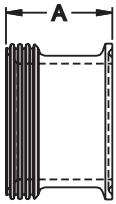
Sanitary Clamp Fittings

SP17PC - SPECIAL ADAPTER 13H-14 x SP-CLAMP



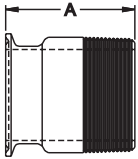
Size	1"	1.5"	2"	2.5"	3"	4"
A	2.50"	2.63"	2.63"	2.88"	2.88"	2.88"

SP17TC - SPECIAL ADAPTER 15 x SP-CLAMP



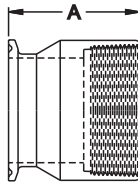
Size	1"	1.5"	2"	2.5"	3"	4"
A	1.69"	1.72"	1.72"	1.84"	1.91"	2.34"

SP21 - ADAPTER MALE NPT x SP-CLAMP



Size	1"	1.5"	2"	2.5"	3"	4"
A	2.25"	2.44"	2.66"	3.19"	3.50"	3.41"

SP22 - ADAPTER FEMALE NPT x SP-CLAMP



Size	1"	1.5"	2"	2.5"	3"	4"
A	1.63"	2.25"	2.34"	2.09"	2.19"	2.63"

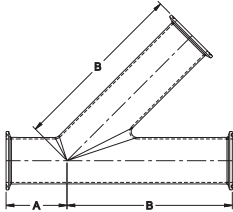
SP23B - THERMOMETER CAP



Size	1"	1.5"	2"	2.5"	3"	4"
A	.50"	.50"	.50"	.50"	.50"	.50"

Sanitary Clamp Fittings

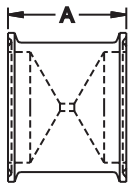
SP28CA - LATERAL "Y" SP-CLAMP ENDS



Size	1"	1.5"	2"	2.5"	3"	4"
A	1.50"	1.69"	2.13"	2.00"	2.38"	2.56"
B	5.50"	6.69"	7.63"	9.00"	9.38"	11.25"

Contact factory for reducing sizes

SP484 - LINE ORIFICE

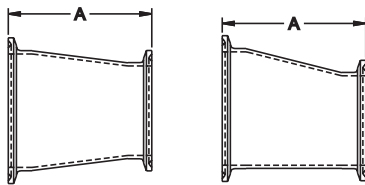


Size	1"	1.5"	2"	2.5"	3"	4"
A	2.00"	2.00"	2.00"	2.00"	2.00"	2.00"

Supplied with 1/8" dia. hole. Contact factory for custom sizes.

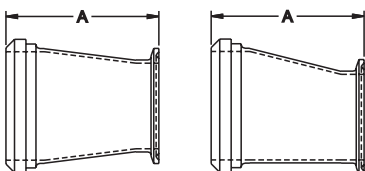
See page 36 for more information

SP31CC and SP32CC SP-CLAMP REDUCERS



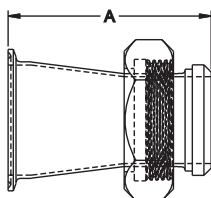
Size	2" x 1"	2" x 1.5"	2.5" x 2"	3" x 2"	3" x 2.5"	4" x 3"
A	5.00"	3.00"	3.00"	5.00"	3.00"	5.13"

SP31PC and SP32PC SP-CLAMP REDUCERS



Size	2" x 1"	2" x 1.5"	2.5" x 2"	3" x 2"	3" x 2.5"	4" x 3"
A	5.22"	3.22"	3.34"	5.34"	3.41"	5.53"

SP31CP REDUCER SP-CLAMP x 13H-14 CONCENTRIC REDUCER

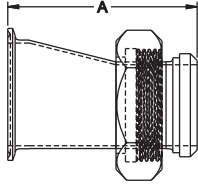


Size	2" x 1"	2" x 1.5"	2.5" x 2"	3" x 2"	3" x 2.5"	4" x 3"
A	6.13"	4.22"	4.38"	6.50"	4.63"	6.47"

** Contact Factory for Sizes Not Shown **

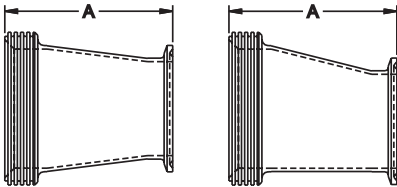
Sanitary Clamp Fittings

SP32CP REDUCER SP-CLAMP x 13H - 14 ECCENTRIC REDUCER



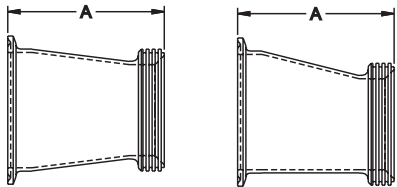
Size	2" x 1"	2" x 1.5"	2.5" x 2"	3" x 2"	3" x 2.5"	4" x 3"
A	6.13"	4.22"	4.38"	6.50"	4.63"	6.47"

SP31TC and SP32TC REDUCERS 15 x SP-CLAMP



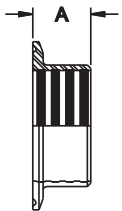
Size	2" x 1"	2" x 1.5"	2.5" x 2"	3" x 2"	3" x 2.5"	4" x 3"
A	5.22"	3.22"	3.34"	5.41"	3.41"	5.53"

SP31CT and SP32CT REDUCERS SP-CLAMP x 15



Size	2" x 1"	2" x 1.5"	2.5" x 2"	3" x 2"	3" x 2.5"	4" x 3"
A	5.22"	3.22"	3.34"	5.41"	3.41"	5.53"

SP31R - REDUCING ROLL-ON FERRULE

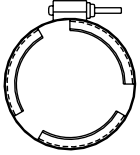


Size	1.5"x1"	2" x 1"	2" x 1.5"	2.5" x 2"	3" x 2"	3" x 2.5"	4" x 3"
A	.75	.75"	1.13"	1.88"	1.16"	1.38"	1.44"

** Contact Factory for Sizes Not Shown **

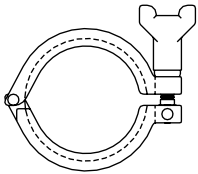
Sanitary Clamp Fittings

SP13F V INSERT CLAMP



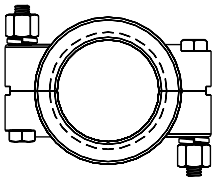
Size	1" THRU 4"
LIGHT DUTY "V" INSERT CLAMP	

SP13HC HEAVY DUTY CLAMP



Size	1" THRU 4"
HEAVY DUTY CLAMP	

SP13HP HIGH PRESSURE CLAMP



Size	1" THRU 4"
HIGH PRESSURE CLAMP	

Contact factory for pressure ratings

Sanitary Clamp Gaskets

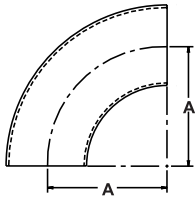
Gaskets are available in sizes 1" thru 4"

SP40 - X	BUNA
SP40E - X	EPDM
SP40SFY - X	VITON®
SP40T - X	P.T.F.E.
SP40S - X	SILICONE
SP40SFYW - X	WHITE VITON®
SP40W - X	WHITE BUNA

X = SIZE

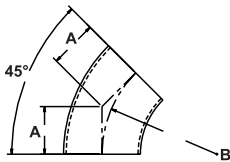
Industrial Weld Fittings

SP2WC - 90 DEG. EL. BUTT-WELD



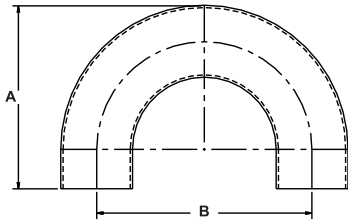
Size	1"	1.5"	2"	2.5"	3"	4"
A	1.50"	2.25"	3.00"	3.75"	4.50"	6.00"

SP2WK - 45 DEG. EL. BUTT-WELD



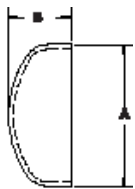
Size	1"	1.5"	2"	2.5"	3"	4"
A	.625"	.938"	1.25"	1.56"	1.88"	2.50"
B	1.50"	2.25"	3.00"	3.75"	4.50"	6.00"

SP2WU - 180 DEG. RETURN BEND



Size	1"	1.5"	2"	2.5"	3"	4"
A	2.00"	3.80"	5.10"	6.10"	7.80"	10.25"
B	3.00"	4.50"	6.00"	7.50"	9.00"	12.00"

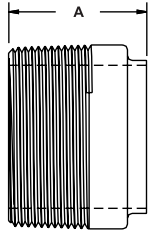
16W - WELD END CAP



Size	1"	1.5"	2"	2.5"	3"	4"
A	1.00"	1.50"	2.00"	2.50"	3.00"	4.00"
B	.375"	1.56"	.750"	1.00"	1.25"	1.50"

Industrial Weld Fittings

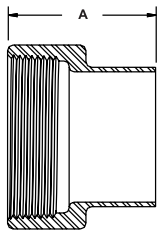
SP19WB - MALE NPT ADAPTER



Size	1"	1.5"	2"	2.5"	3"	4"
A	1.75"	1.75"	1.81"	2.31"	2.50"	2.56"

Contact factory for reducing sizes

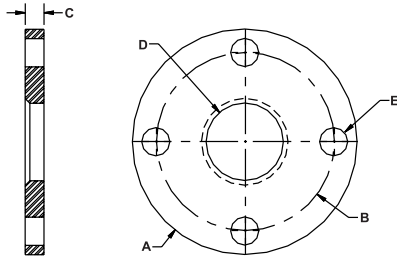
SP22WB - FEMALE NPT ADAPTER



Size	1"	1.5"	2"	2.5"	3"	4"
A	2.44"	2.75"	2.69"	3.38"	3.75"	2.50"

Contact factory for reducing sizes

SP400 PLATE FLANGE

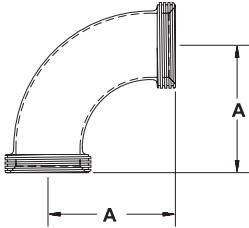


Size	1"	1.5"	2"	2.5"	3"	4"
A	4.50"	5.00"	6.00"	7.00"	7.50"	9.00"
B	3.13"	3.88"	4.75"	5.50"	6.00"	7.50"
C	.500"	.500"	.500"	.500"	.500"	.500"
D	1.03"	1.53"	2.03"	2.53"	3.03"	4.03"
E	.625"	.625"	.750"	.750"	.750"	.750"

All Industrial Weld Fittings are standard "unpolished" finish. Contact factory for 32Ra finish.

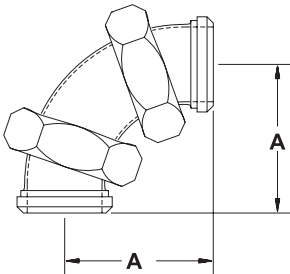
Bevel Seat and John Perry

2C - 90 DEG. EL. BOTH ENDS 15



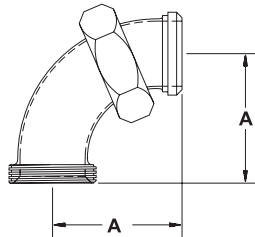
Size	1"	1.5"	2"	2.5"	3"	4"
A	2.18"	2.97"	3.72"	4.59"	5.41"	7.03"

2E - 90 DEG. EL. BOTH ENDS 13H-14



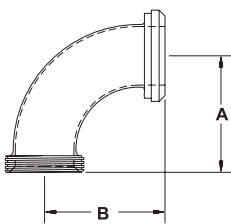
Size	1"	1.5"	2"	2.5"	3"	4"
A	2.18"	2.97"	3.72"	4.59"	5.41"	7.03"

2F - 90 DEG. EL. ONE END 15 x 13H-14



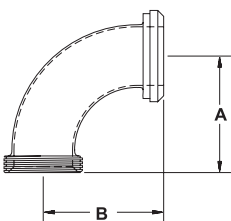
Size	1"	1.5"	2"	2.5"	3"	4"
A	2.18"	2.97"	3.72"	4.59"	5.41"	7.03"

2F - 31 90 DEG. EL. SMALL END 15 x LARGE END 13H-14



Size	1.5" x 1"	2" x 1.5"	2.5" x 2"	3" x 2"	3" x 2.5"	4" x 3"
A	2.00"	2.88"	3.72"	3.72"	4.84"	5.91"
B	2.00"	2.91"	3.78"	3.84"	4.84"	5.47"

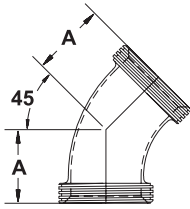
2F - 32 90 DEG. EL. SMALL END 15 x LARGE END 13H-14



Size	1.5" x 1"	2" x 1.5"	2.5" x 2"	3" x 2"	3" x 2.5"	4" x 3"
A	2.00"	2.88"	3.72"	3.72"	4.84"	5.91"
B	2.00"	2.91"	3.78"	3.84"	4.84"	5.47"

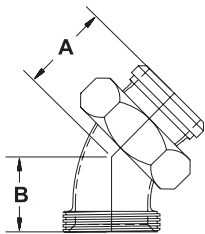
Bevel Seat and John Perry

2K - 45 DEG. EL. BOTH ENDS 15



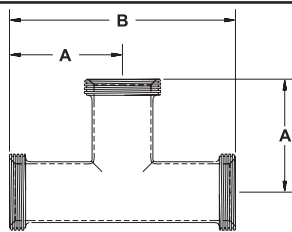
Size	1"	1.5"	2"	2.5"	3"	4"
A	1.31"	1.72"	2.13"	2.63"	3.13"	4.25"

2P - 45 DEG. EL. ONE END 15 x 13H-14



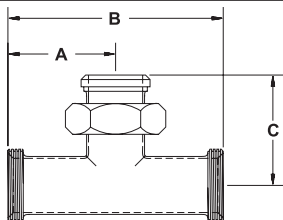
Size	1"	1.5"	2"	2.5"	3"	4"
A	2.13"	2.13"	2.31"	2.56"	2.91"	3.88"
B	1.31"	1.72"	2.13"	2.63"	3.13"	4.25"

7 - TEE ALL ENDS 15



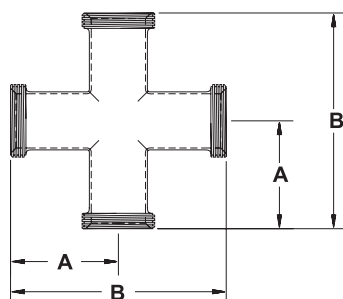
Size	1"	1.5"	2"	2.5"	3"	4"
A	1.81"	2.38"	2.78"	3.19"	3.50"	4.66"
B	3.63"	4.75"	5.56"	6.38"	7.00"	9.31"

7A - TEE TWO ENDS 15 x 13H-14



Size	1"	1.5"	2"	2.5"	3"	4"
A	1.81"	2.38"	2.78"	3.19"	3.50"	4.66"
B	3.63"	4.75"	5.56"	6.38"	7.00"	9.31"
C	2.69"	3.41"	3.81"	4.25"	4.63"	6.13"

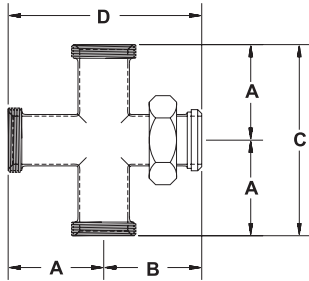
9 - CROSS ALL ENDS 15



Size	1"	1.5"	2"	2.5"	3"	4"
A	1.81"	2.38"	2.78"	3.19"	3.50"	4.66"
B	3.63"	4.75"	5.56"	6.38"	7.00"	9.31"

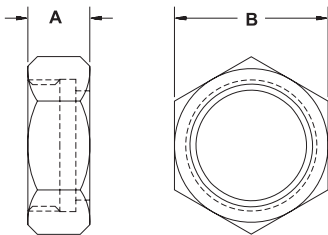
Bevel Seat and John Perry

9A - THREADED ENDS 15 x 13H-14



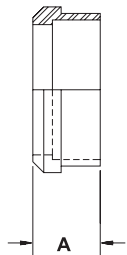
Size	1"	1.5"	2"	2.5"	3"	4"
A	1.81"	2.38"	2.78"	3.19"	3.50"	4.66"
B	2.69"	3.41"	3.81"	4.25"	4.63"	6.13"
C	4.50"	5.78"	6.59"	7.44"	8.13"	10.78"
D	3.63"	4.75"	5.56"	6.38"	7.00"	9.31"

13H - HEX UNION NUT



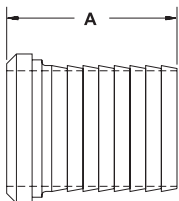
Size	1"	1.5"	2"	2.5"	3"	4"
A	1.81"	2.41"	3.00"	3.60"	4.19"	5.44"
B	.906"	.968"	1.06"	1.19"	1.28"	1.50"

14 - PLAIN RECESS FERRULE



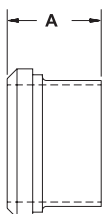
Size	1"	1.5"	2"	2.5"	3"	4"
A	.750"	.875"	.968"	1.06"	1.13"	1.25"

14AHR - RUBBER HOSE ADAPTER



Size	1"	1.5"	2"	2.5"	3"	4"
A	2.68"	2.72"	2.72"	2.84"	2.91"	3.03"

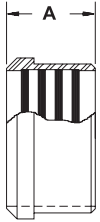
14A - ONE END 14 x BUTT-WELD FERRULE



Size	1"	1.5"	2"	2.5"	3"	4"
A	1.38"	1.50"	1.50"	1.75"	1.75"	1.75"

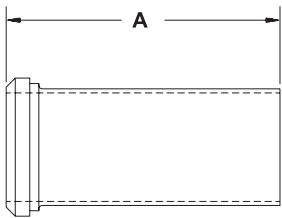
Bevel Seat and John Perry

14R - PLAIN ROLL ON RECESSLESS FERRULE



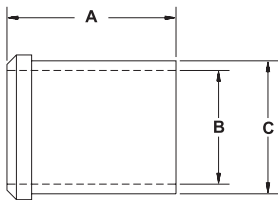
Size	1"	1.5"	2"	2.5"	3"	4"
A	.750"	1.13"	1.31"	1.38"	1.44"	1.50"

14AHT - TYGON HOSE ADAPTER



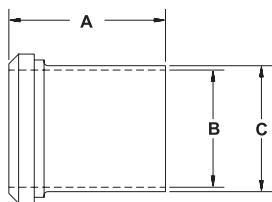
Size	1"	1.5"	2"	2.5"	3"	4"
A	4.69"	4.72"	4.72"	4.84"	4.91"	5.22"

14W - TANK SPUD HEAVY WALL FERRULE



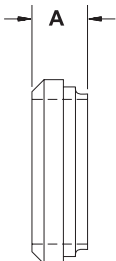
Size	1"	1.5"	2"	2.5"	3"	4"
A	2.38"	2.53"	2.78"	3.06"	3.53"	4.31"
B	.870"	1.37"	1.87"	2.37"	2.87"	3.83"
C	1.16"	1.68"	2.19"	2.70"	3.22"	4.25"

14WL - TANK SPUD LIGHT FERRULE



Size	1"	1.5"	2"	2.5"	3"	4"
A	2.00"	2.25"	2.50"	2.75"	3.00"	4.00"
B	.870"	1.37"	1.87"	2.37"	2.87"	3.83"
C	1.00"	1.50"	2.00"	2.50"	3.00"	4.00"

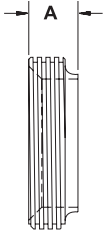
14PS - BUTT-WELD x 14 FERRULE



Size	1"	1.5"	2"	2.5"	3"	4"
A	.688"	.718"	.718"	.844"	.906"	1.03"

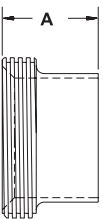
Bevel Seat and John Perry

15TS - BUTT-WELD x 15 SHORT FERRULE



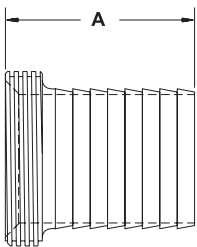
Size	1"	1.5"	2"	2.5"	3"	4"
A	.688"	.718"	.718"	.844"	.906"	1.03"

15A - BUTT-WELD x 15 FERRULE



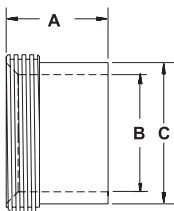
Size	1"	1.5"	2"	2.5"	3"	4"
A	1.38"	1.50"	1.50"	1.75"	1.75"	1.75"

15AHR - RUBBER HOSE ADAPTER



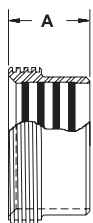
Size	1"	1.5"	2"	2.5"	3"	4"
A	2.68"	2.72"	2.72"	2.84"	2.91"	3.03"

15W - TANK SPUD HEAVY WALL



Size	1"	1.5"	2"	2.5"	3"	4"
A	1.50"	1.63"	1.75"	1.75"	1.81"	2.13"
B	.870"	1.37"	1.87"	2.37"	2.87"	3.83"
C	1.16"	1.68"	2.19"	2.71"	3.22"	4.25"

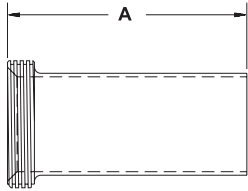
15R - ROLL ON FERRULE



Size	1"	1.5"	2"	2.5"	3"	4"
A	.812"	1.13"	1.38"	1.50"	1.63"	1.63"

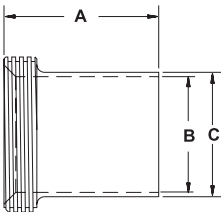
Bevel Seat and John Perry

15AHT - TYGON HOSE ADAPTER



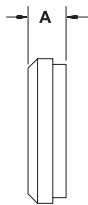
Size	1"	1.5"	2"	2.5"	3"	4"
A	4.69"	4.72"	4.72"	4.84"	4.91"	5.22"

15WL TANK SPUD (LIGHT)



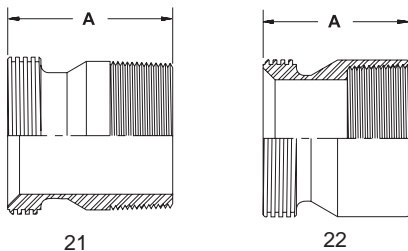
Size	1"	1.5"	2"	2.5"	3"	4"
A	2.00"	2.25"	2.50"	2.75"	3.00"	4.00"
B	.870"	1.37"	1.87"	2.37"	2.87"	3.83"
C	1.00"	1.50"	2.00"	2.50"	3.00"	4.00"

16A - SOLID END CAP



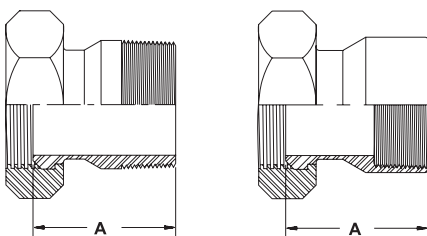
Size	1"	1.5"	2"	2.5"	3"	4"
A	---	.563"	.625"	.656"	.719"	.813"

21 AND 22 ADAPTERS



Size	1"	1.5"	2"	2.5"	3"	4"
21-A	2.25"	2.44"	2.66"	3.28"	3.50"	3.81"
22-A	2.06"	2.25"	2.34"	2.09"	2.19"	2.63"

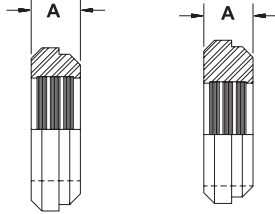
21F AND 22F ADAPTERS



Size	1"	1.5"	2"	2.5"	3"	4"
21F-A	2.60"	2.47"	3.00"	3.63"	4.16"	4.53"
22F-A	2.50"	2.81"	2.72"	3.25"	3.84"	4.22"

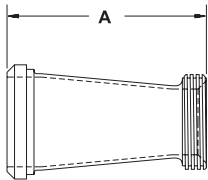
Bevel Seat and John Perry

31R AND 32R RECESSLESS ROLL-ON FERRULE



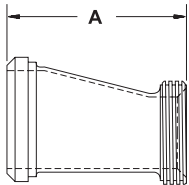
Size	1.5" x 1"	2" x 1.5"	2.5" x 2"	3" x 2"	3" x 2.5"	4" x 3"
A	.719"	.719"	.719"	1.03"	1.03"	1.33"

31-15F CONCENTRIC REDUCER LARGE END 14 x SMALL END 15



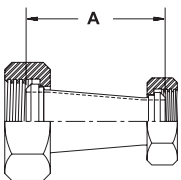
Size	1.5" x 1"	2" x 1.5"	2.5" x 2"	3" x 2"	3" x 2.5"	4" x 3"
A	3.41"	3.44"	3.56"	5.63"	3.75"	6.13"

32-15F ECCENTRIC REDUCER LARGE END 14 x SMALL END 15



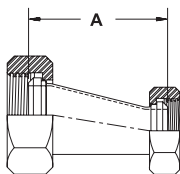
Size	1.5" x 1"	2" x 1.5"	2.5" x 2"	3" x 2"	3" x 2.5"	4" x 3"
A	3.41"	3.44"	3.56"	5.63"	3.75"	6.13"

31-14F CONCENTRIC REDUCER BOTH ENDS 13H-14



Size	1.5" x 1"	2" x 1.5"	2.5" x 2"	3" x 2"	3" x 2.5"	4" x 3"
A	4.34"	4.44"	4.75"	6.81"	5.06"	7.53"

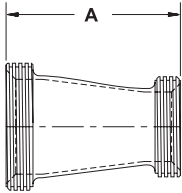
32-14F ECCENTRIC REDUCER BOTH ENDS 13H-14



Size	1.5" x 1"	2" x 1.5"	2.5" x 2"	3" x 2"	3" x 2.5"	4" x 3"
A	4.34"	4.44"	4.75"	6.81"	5.06"	7.53"

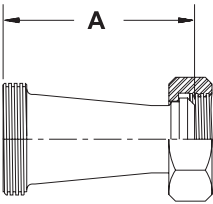
Bevel Seat and John Perry

31TT - CONCENTRIC REDUCER BOTH ENDS 15



Size	1.5" x 1"	2" x 1.5"	2.5" x 2"	3" x 2"	3" x 2.5"	4" x 3"
A	3.41"	3.44"	3.56"	5.63"	3.75"	5.94"

31TP - CONCENTRIC REDUCER BOTH ENDS 15



Size	1.5" x 1"	2" x 1.5"	2.5" x 2"	3" x 2"	3" x 2.5"	4" x 3"
A	4.34"	4.44"	4.75"	6.81"	5.06"	7.53"

Bevel Seat And John Perry Gaskets

Gaskets are available in sizes 1" thru 4"

40BSB - X
40BSS - X
JP40 - X
JP40T - X

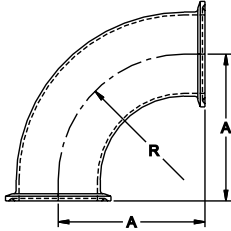
BUNA
P.T.F.E
BUNA
P.T.F.E.

X = SIZE

Note: To Order John Perry fittings add "JP" to the bevel seat number
i.e. 14A becomes a JP14A

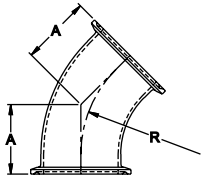
6" Sanitary Fittings

SP2C - 90 DEG. EL. BOTH ENDS SP-CLAMP



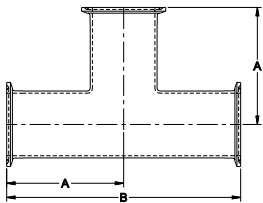
Size	6"
A	9.69"
R	9.00"

SP2K - 45 DEG. EL. BOTH ENDS SP-CLAMP



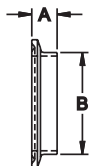
Size	6"
A	4.13"
R	9.00"

SP7 - TEE SP-CLAMP ENDS



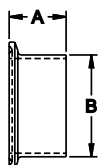
Size	6"
A	8.69"
B	17.38"

SP14SW - SHORT WELD FERRULE



Size	6"
A	.688"
B	6.00"

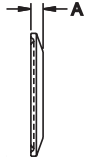
SP14A - LONG WELD FERRULE



Size	6"
A	1.50"
B	6.00"

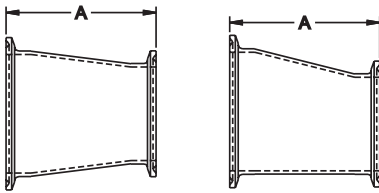
6" Sanitary Fittings

SP16A - SOLID END CAP



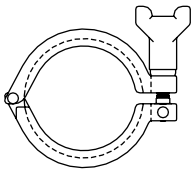
Size	6"
A	.625"

SP31CC and SP32CC SP-CLAMP REDUCERS

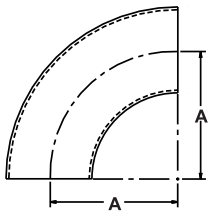


Size	6" x 3"	6" x 4"
A	6.69"	6.81"

SP13HC - HEAVY DUTY CLAMP

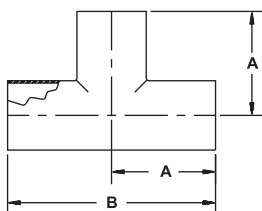


SP2WC - 90 DEG. EL. BUTT-WELD ENDS



Size	6"
A	9.00"

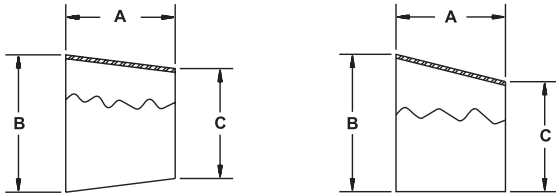
SP7W - ALL ENDS BUTT-WELD



Size	6"
A	8.00"
B	16.00"

6" Sanitary Fittings

SP31 AND SP32 BUTT-WELD REDUCERS



Size	6" x 3"	6" x 4"
A	6.00"	6.00"
B	4.00"	3.00"
C	5.50"	5.50"

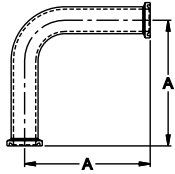
6" Gaskets

SP40 - 6"	BUNA
SP40E - 6"	EPDM
SP40SFY - 6"	VITON®
SP40T - 6"	P.T.F.E.
SP40SFYW-6"	WHITE VITON®
SP40W-6"	WHITE BUNA

Viton is a registered trademark of DuPont Elastomers LLC.

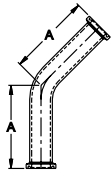
Sanitary Fractional Fittings

SP2C - 90 DEG. EL. SP-CLAMP ENDS



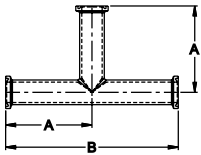
Size	1/2"	3/4"
A	3.50"	3.50"

SP2K - 45 DEG. EL. SP-CLAMP ENDS



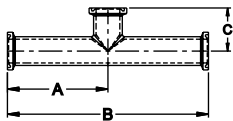
Size	1/2"	3/4"
A	2.75"	2.75"

SP7 - TEE SP-CLAMP ENDS



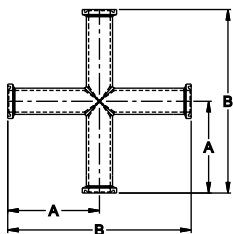
Size	1/2"	3/4"
A	2.63"	5.25"
B	2.63"	5.25"

SP7S - TEE SP-CLAMP ENDS SHORT OUTLET



Size	1/2"	3/4"
A	2.63"	5.25"
B	2.63"	5.25"
C	1.00"	1.13"

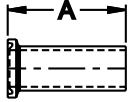
SP9 - CROSS SP-CLAMP ENDS



Size	1/2"	3/4"
A	2.63"	5.25"
B	2.63"	5.25"

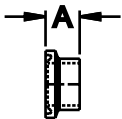
Sanitary Fractional Fittings

SP14A - LONG CLAMP FERRULE



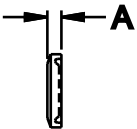
Size	1/2"	3/4"
A	1.75"	1.75"

SP14SW - SHORT CLAMP FERRULE



Size	1/2"	3/4"
A	.500"	.500"

SP16A - SOLID END CAP



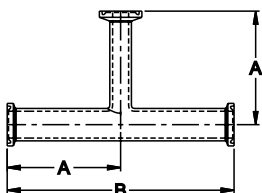
Size	3/4"
Fits 1/2" and 3/4"	

SP13HC - HEAVY DUTY CLAMP



Size	3/4"
Fits 1/2" and 3/4"	

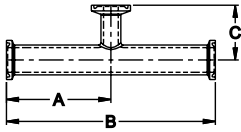
SP7R - REDUCING TEE ALL SP-CLAMP ENDS



Size	3/4" x 1/2"	1" x 1/2"	1" x 3/4"	1.5" x 1/2"	1.5" x 3/4"
A	2.63"	2.63"	2.63"	2.88"	2.88"
B	5.25"	5.25"	5.25"	5.75"	5.75"

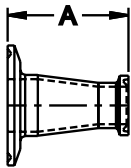
Sanitary Fractional Fittings

SP7RS - SHORT OUTLET REDUCING TEE SP-CLAMP ENDS



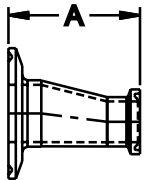
Size	3/4" x 1/2"	1" x 1/2"	1" x 3/4"	1.5" x 1/2"	1.5" x 3/4"
A	2.63"	2.63"	2.63"	2.88"	2.88"
B	5.25"	5.25"	5.25"	5.75"	5.75"
C	1.00"	1.13"	1.13"	1.38"	1.38"

SP31CC - CONCENTRIC REDUCER SP-CLAMP ENDS



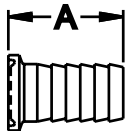
Size	3/4" x 1/2"	1" x 1/2"	1" x 3/4"	1.5" x 1/2"	1.5" x 3/4"
A	2.00"	2.50"	2.00"	4.50"	4.00"

SP32CC - ECCENTRIC REDUCER SP-CLAMP ENDS



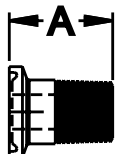
Size	3/4" x 1/2"	1" x 1/2"	1" x 3/4"	1.5" x 1/2"	1.5" x 3/4"
A	2.00"	2.50"	2.00"	4.50"	4.00"

SP14AHR - Rubber Hose Adapter



Size	1/2"	3/4"
A	1.50"	1.50"

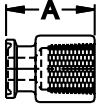
SP21 - MALE NPT ADAPTER



Size	1/2"	3/4"
A	2.00"	2.00"

Sanitary Fractional Fittings

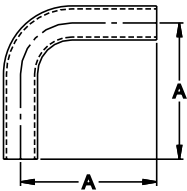
SP22 - FEMALE NPT ADAPTER



Size	1/2"	3/4"
A	1.50"	1.50"

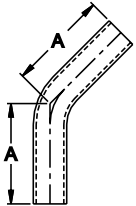
Not 3A

SP2S - 90 DEG. EL. BUTT-WELD



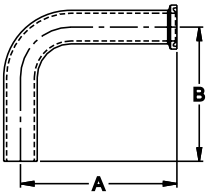
Size	1/2"	3/4"
A	3.00"	3.00"

SP2KS - 45 DEG. EL. BUTT-WELD



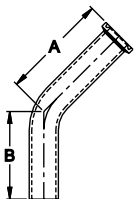
Size	1/2"	3/4"
A	2.25"	2.25"

SP2CW - 90 DEG. EL. SP-CLAMP x BUTT-WELD



Size	1/2"	3/4"
A	3.50"	3.50"
B	3.00"	3.00"

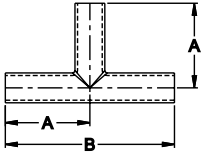
SP2KCW - 45 DEG. EL. SP-CLAMP x BUTT-WELD



Size	1/2"	3/4"
A	2.75"	2.25"
B	2.75"	2.25"

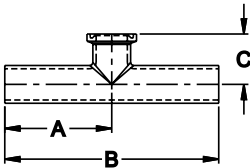
Sanitary Fractional Fittings

SP7W - TEE BUTT-WELD ENDS



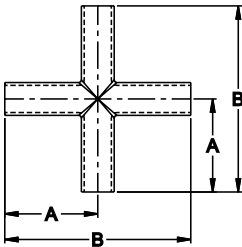
Size	1/2"	3/4"
A	2.13"	4.25"
B	2.13"	4.25"

SP7WWCS - SHORT OUTLET TEE BUTT-WELD x SP-CLAMP



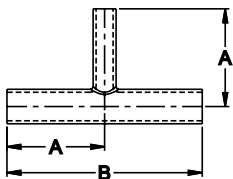
Size	1/2"	3/4"
A	2.13"	4.25"
B	2.13"	4.25"
C	1.00"	1.13"

SP9W - BUTT-WELD CROSS



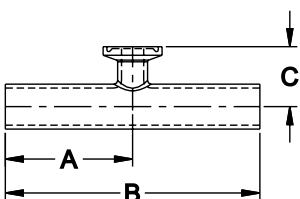
Size	1/2"	3/4"
A	2.13"	4.25"
B	2.13"	4.25"

SP7WR - REDUCING TEE BUTT-WELD



Size	3/4" x 1/2"	1" x 1/2"	1" x 3/4"	1.5" x 1/2"	1.5" x 3/4"
A	2.13"	2.13"	2.13"	2.38"	2.38"
B	4.25"	4.25"	4.25"	4.75"	4.75"

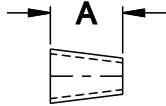
SP7WWCRS - SHORT OUTLET REDUCING TEE BUTT-WELD x SP-CLAMP



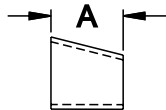
Size	3/4" x 1/2"	1" x 1/2"	1" x 3/4"	1.5" x 1/2"	1.5" x 3/4"
A	2.13"	2.13"	2.13"	2.38"	2.38"
B	4.25"	4.25"	4.25"	4.75"	4.75"
C	1.00"	1.13"	1.13"	1.38"	1.38"

Sanitary Fractional Fittings

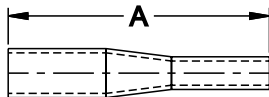
SP31 and SP32 BUTT-WELD REDUCERS



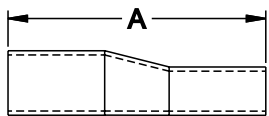
Size	3/4" x 1/2"	1" x 1/2"	1" x 3/4"	1.5" x 1/2"	1.5" x 3/4"
A	1.00"	1.50"	1.00"	2.50"	2.00"



SP31E and SP32E LONG TANGENT BUTT-WELD REDUCERS



Size	3/4" x 1/2"	1" x 1/2"	1" x 3/4"	1.5" x 1/2"	1.5" x 3/4"
A	4.00"	4.00"	4.00"	5.50"	5.00"



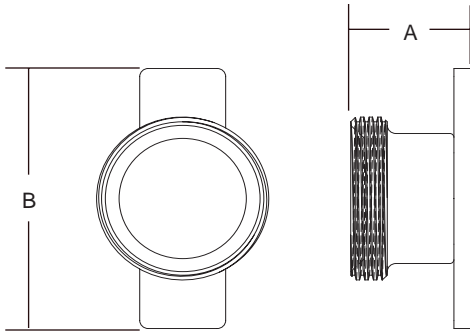
Fractional Gaskets

SP40 - X	BUNA
SP40E - X	EPDM
SP40SFY - X	VITON®
SP40T - X	P.T.F.E.
SP40S - X	SILICONE
SP40SFYW - X	WHITE VITON®
SP40W - X	WHITE BUNA

X = SIZE

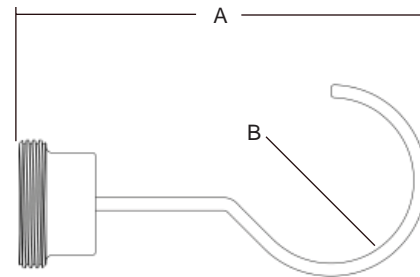
Viton is a registered trademark of DuPont Elastomers LLC.

Threaded End Caps and Wrenches



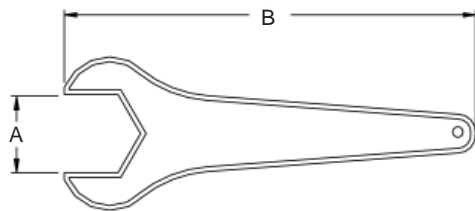
16AT-Threaded Cap

Size	A	B
1"	1.63"	3.00"
1.5"	1.75"	3.00"
2"	1.75"	4.00"
2.5"	2.00"	4.00"
3"	2.00"	5.00"
4"	2.00"	6.00"



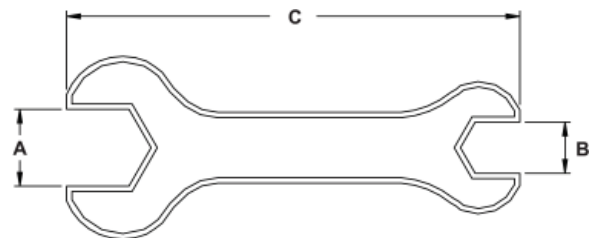
16ATH-Threaded Cap with Hanger

Size	A	B
1"	4.25"	1.00"
1.5"	5.00"	1.50"
2"	5.75"	2.00"
2.5"	6.50"	2.50"
3"	8.00"	3.00"
4"	10.00"	4.00"



25H- Hex Wrench

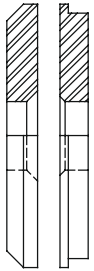
Size	A	B
1.5"	2.44"	13.00"
2"	3.03"	14.25"
2.5"	3.66"	17.50"
3"	4.25"	20.50"
4"	5.44"	23.00"



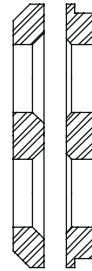
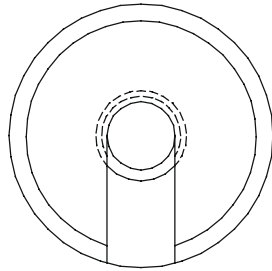
25HA- Double Hex Wrench

Size	A	B	C
2" x 1.5"	3.03"	2.44"	13.63"
2.5" x 2"	3.66"	3.03"	18.00"
3" x 2"	4.25"	4.13"	18.25"

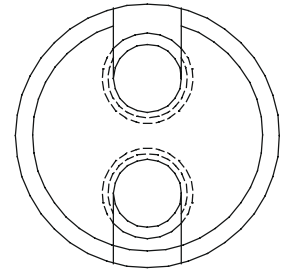
Thermometer Ferrules



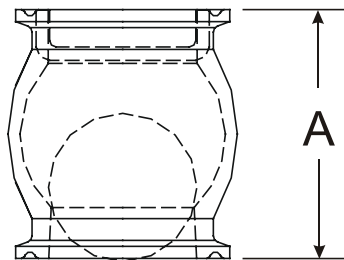
23C-Split Ferrule



23D- Dual Split Ferrule



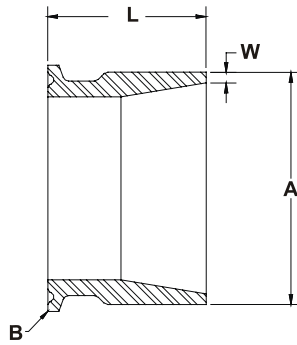
SP251 Check Valves



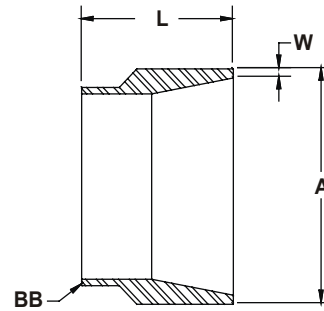
Size	A	Ball Dia.
1.5"	2.312"	1.375"
2"	3.176"	1.875"
2.5"	3.500"	2.375"

Material: SS-T304
Ball Material : Nylon

Sanitary Clamp and Tube x Pipe Adapters



SP14AX-H



W14AX-H

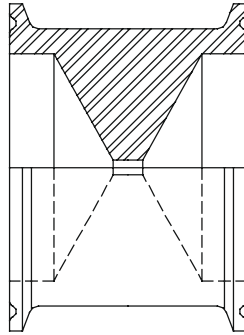
Sch, 10 (AX) are standard

		Clamp Size	Tube Size	Length	Wall
Size	A	B	BB	L	W
T-316L Only for Fractional Sizes					
1/2"	.840"	1/2"	1/2" x .065	1.00"	.083
3/4"	1.050"	3/4"	3/4" x .065	1.00"	.103
Size	A	B	BB	L	W
1"	1.32"	1"	1" x .065	1.63"	0.10
1.5"	1.90"	1.5"	1.5" x .065	1.63"	0.11
2"	2.38"	2"	2" x .065	1.63"	0.11
2.5"	2.88"	2.5"	2.5" x .065	1.63"	0.12
3"	3.50"	3"	3" x .065	1.63"	0.12
4"	4.50"	4"	4" x .083	1.75"	0.12
6"	6.63"	6"	6" x .109	1.75"	0.13
8"	8.63"	8"	8" x .109	1.75"	0.15

Sch.5 (AV) and Sch.40 (AY) adapters are available upon request.

Reducing and Expanding sizes available upon request.

SP484 Line Orifices



Common applications for SP484's are:

- * To create a false head for a centrifugal pump
- * To increase the line pressure
- * To decrease the flow through a line
- * To increase the fluid velocity in a line.

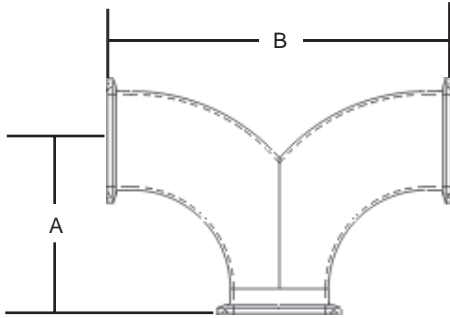
SP484 are available in all sizes 1/2" thru 4". Standard overall length is 2", other lengths are available on request.

Blanks and 1/8" Ø hole are standard, other sizes are made to order.
32Ra standard finish, contact factory for other options.
T316L only

Contact Factory if assistance is need for sizing.

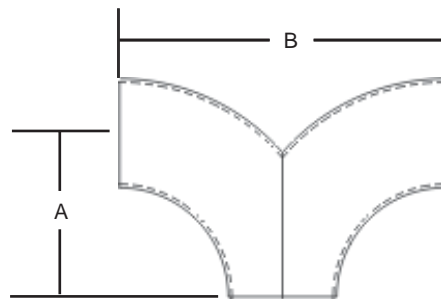
180 Deg. U-Bends and Special "Y" Elbows

SP2YC-Special "Y" Clamp Ends



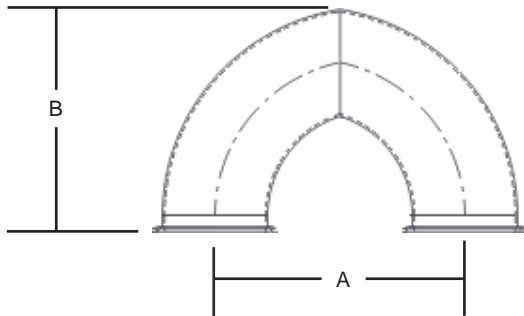
Size	A	B
1.5"	2.75"	5.50"
2"	3.50"	7.00"
2.5"	4.25"	8.50"
3"	5.00"	10.00"
4"	6.62"	13.25"

SP2YC-Special "Y" Weld Ends



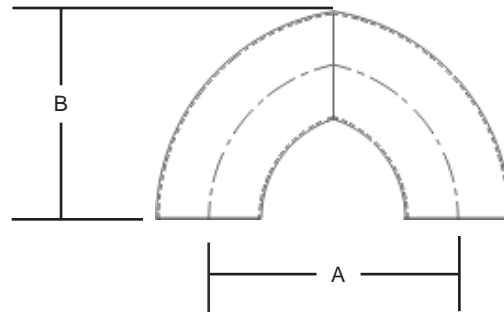
Size	A	B
1.5"	3.25"	4.50"
2"	4.00"	6.00"
2.5"	4.75"	7.50"
3"	5.50"	9.00"
4"	7.00"	12.00"

180° U-Bend Clamp Ends



Size	A	B
1.5"	4.50"	4.305"
2"	6.00"	5.605"
2.5"	6.00"	5.443"
3"	6.00"	6.309"
4 *	9.50"	9.125"

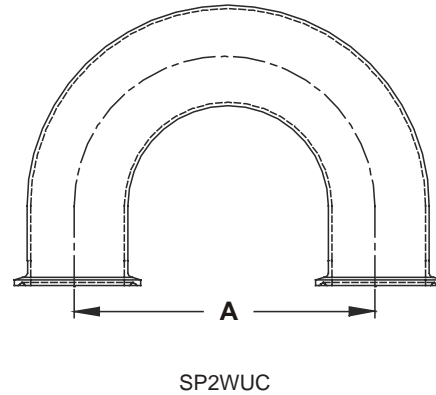
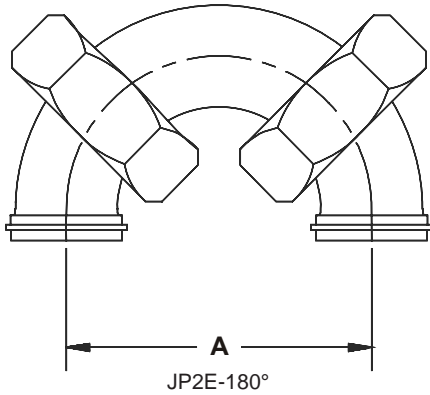
180° U-Bend Weld Ends



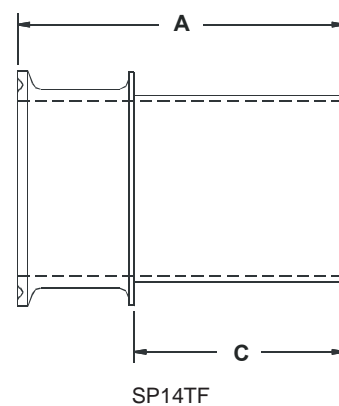
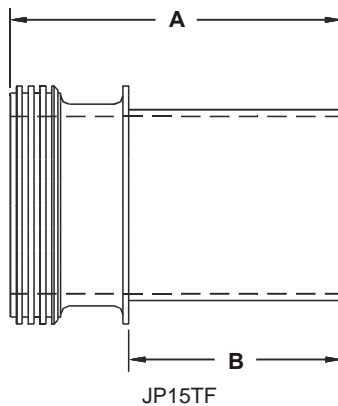
Size	A	B
1.5"	4.50"	3.805"
2"	6.00"	5.105"
2.5"	6.00"	4.943"
3"	6.00"	5.809"
4 *	9.50"	8.625"

* Other center lines available in 4"

Flow Plate Accessories



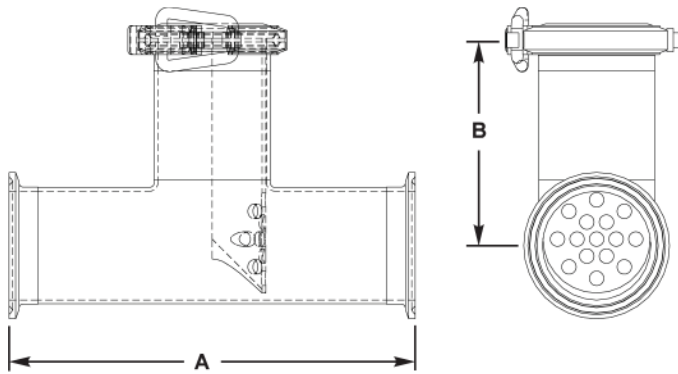
Size	A
1.5"	4.50"
2"	6.00"
2.5"	7.50"
3"	9.00"
4"	12.00"



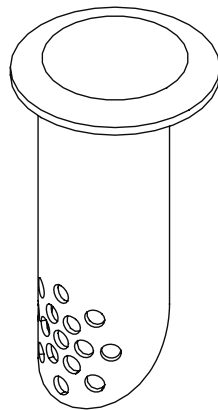
Size	A	B	C
1.5"	3.50"	2.25"	2.25"
2"	3.50"	2.25"	2.25"
2.5"	3.50"	2.25"	2.25"
3"	3.50"	2.00"	2.25"
4"	3.50"	2.00"	2.25"

Contact factory for other end connection options

SP250 Screen Tee



Complete Screen Tee		
Size	A	B
1.5"	5.50"	2.75"
2"	7.00"	3.50"
2.5"	7.00"	3.50"
3"	7.50"	3.75"
4"	9.00"	4.50"



Perforations in screen assembly are 1/4"Ø



Stainless Products, Inc.

1649 72nd Ave

PO Box 169

Somers, WI 53104

Ph: 800-558-9446 262-859-2826

Fax: 262-859-2871

www.stainless-products.com