

# Stainless Products Inc.

Sanitary Flow Solutions .....Since 1972  
1649-72nd Avenue Somers, WI 53171  
Tel: 262-859-2826 Toll Free: 800-558-9446  
Fax: 262-859-2871

316L Stainless Steel Construction  
Machined to 20 Ra or less

Pressure Rating: 400 PSI @ 200 Degrees F  
Optional 90 Degree or In-Line Models  
w/ 1/2" , 1" 1/2" & 2" Tri-Clamp Ferrule, 1/4" NPT or  
Weld Bodies.

1/2" Tri-Clamp Model Available with Unique Stem  
Extensions for Sampling Directly within Product Flow in

1" - 4" Tubing. Flushing Hole at Base of Stem Provides for  
Continuous Flow Through Stem for Fresh Sample of Product. .

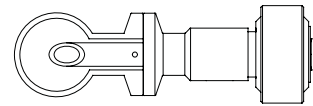
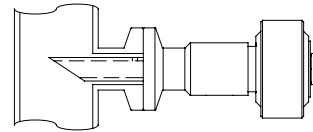
3/8" OD Hose Barb Product Discharge

Minimized Dead Space for Possible Contamination

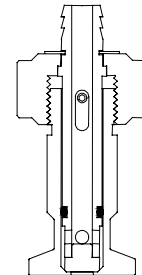
Limited Stem Travel for Safety

Silicone O-Ring Standard w/ Other Materials Optional

Solid Delrin Knob Standard w/ 17-4SS Knob Insert Optional



Stem Extension  
Shown in 1" Tube



Valve Section



Sanitary Sample Valves